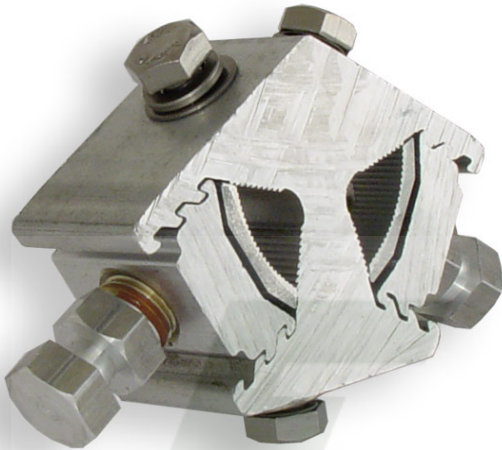


DATA SHEET

AMC2 & AMC2-1

ALUMINIUM MAINS CONNECTOR



DESCRIPTION	TWO WAY ALUMINIUM MAINS CONNECTOR (50-120 & 120-240mm ²)
SIZE (mm)	97L x 76H x 30W
COLOUR	ALUMINIUM
WEIGHT	0.265 kg

MATERIAL: ALUMINIUM

HARDWARE: STAINLESS STEEL - GRADE 304

TESTING:

SALES DRAWING No: 1-S0071

NOTE: Grooves in the main body ensure good electrical contact when the shear bolts are tensioned to their breaking capacity. Pressure Pads are grooved and are attached to the shear bolt to ensure they are not lost. Dropper wires are provided if required, from connection points in three (3) places around the main body for service take-offs to feed consumer supply. The PVC SHR4 Shroud has been designed to fit the Mains Connector to ensure insulation between the phase cables.
AMC2 designed to suit sector cable 120-240mm²
AMC2-1 designed to suit sector cable 50-120mm²