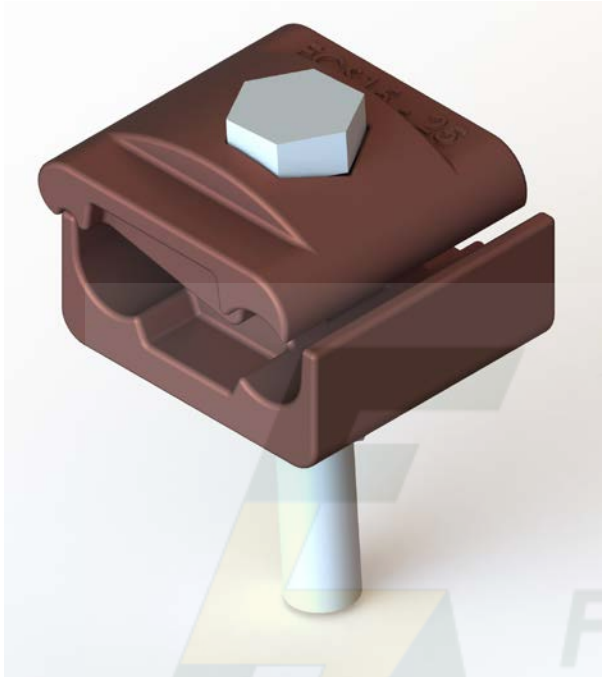


DATA SHEET

ECS1525 SINGLE BOLT PG CLAMP



DESCRIPTION	SINGLE BOLT PG CLAMP
SIZE (mm)	55L x 52W x 40H
COLOUR	COPPER
WEIGHT	0.65 kg

MATERIAL: COPPER

HARDWARE: STAINLESS STEEL – GRADE 304

TESTING: Designed to be compliant to AS1154.1-2009 (non-tension fittings – short-time current test)

SALES DRAWING No: 8-S0033

NOTE: Earthing Clamp Single Bolt for Conductor 35-150mm²/ 7.65mm-15.75mm OD