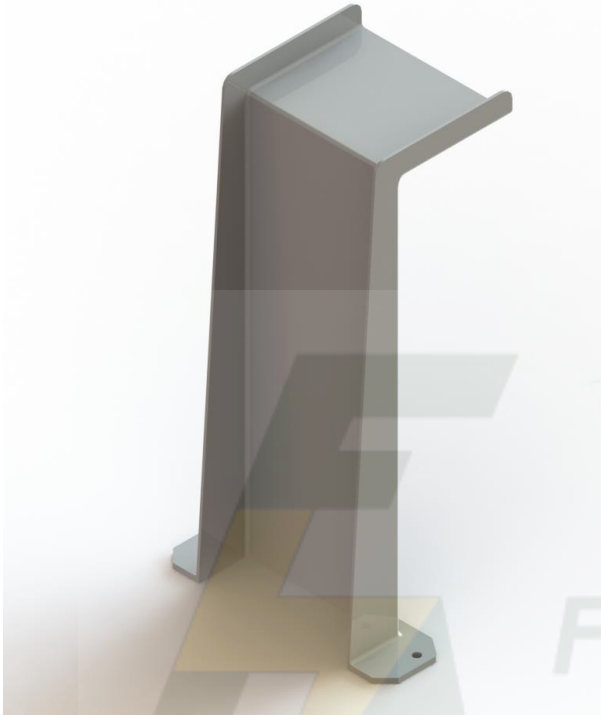


DATA SHEET FDP1TRA

BLANK FIBREGLASS RIGHT ANGLE PANEL



DESCRIPTION	BLANK FIBREGLASS RIGHT ANGLE PANEL
SIZE (mm)	660H x 355W x 253D
COLOUR	WHITE
WEIGHT	1.5 kg

MATERIAL: FIBREGLASS – FIRE RETARDANT

HARDWARE: Mounting Hardware sold separately

TESTING:

SALES DRAWING No: 1-S0033

NOTE: Can accommodate 12 x 60/80 amp. series 7 fuses, 3 x active links and neutral link or 12 x 60/80 amp. series 7 fuses on the vertical together with 3 x 400 amp. removable isolating links can be accommodated on the horizontal.

add '/e' to part number for escutcheon panel E.G. FDP1TRA/E

Suits FBP1T series pillars