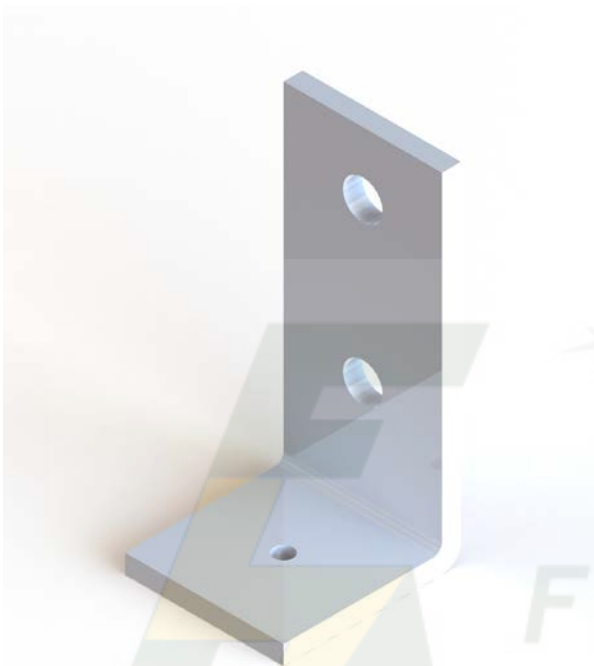


## DATA SHEET

### CRAB 'XX' – SRAB 'XX' RIGHT ANGLE FINIAL BASE



<b>DESCRIPTION</b>	RIGHT ANGLE FINIAL BASE
<b>SIZE (mm)</b>	50W x 56L x 110H
<b>COLOUR</b>	COPPER OR STAINLESS STEEL
<b>WEIGHT</b>	

**MATERIAL:** COPPER OR STAINLESS STEEL

**HARDWARE:** N/A

**TESTING:** NOT AVAILABLE

**SALES DRAWING No:** CRAB-'XX': 8-S0179 – SRAB-'XX': 8-S0233

**NOTE:** Used in conjunction with Lightning Finial. Made from high strength Copper (CRAB-'XX') and Stainless Steel (SRAB-'XX'). Tapped holes are M10, M12 or M16