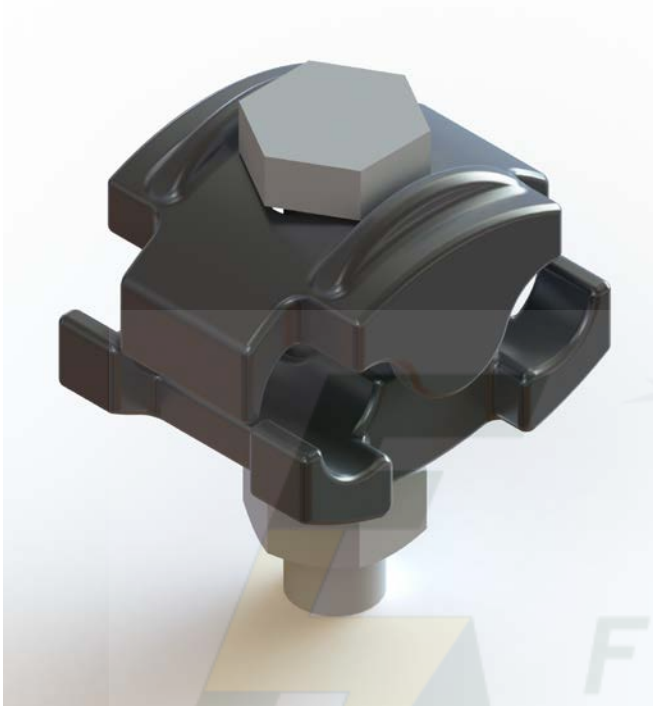


DATA SHEET TO-4/12

ALUMINIUM 'TEE-OFF' CONNECTOR



DESCRIPTION	ALUMINIUM 'TEE-OFF' CONNECTOR
SIZE (mm)	35L x 42.5W x 56H
COLOUR	ALUMINIUM
WEIGHT	0.2 kg

MATERIAL: ALUMINIUM

HARDWARE: STAINLESS STEEL - GRADE 304

TESTING: DESIGNED TO BE COMPLIANT TO AS4325.1

SALES DRAWING No: 4-S0009

NOTE: These connectors are for equal and unequal conductors of Aluminium, steel-cored Aluminium and Copper.

Conductors	
Run and Tap	Diameter
7/1.35 to 7/3.75	4mm to 12mm