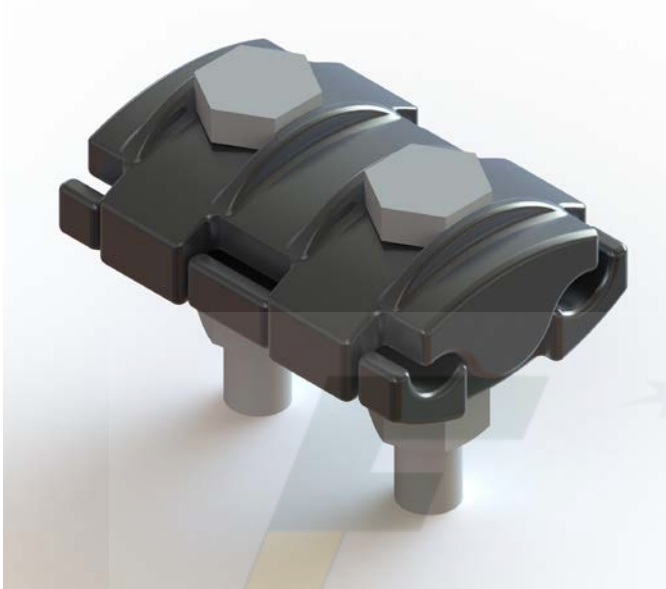


# DATA SHEET

## TOD-4/12

### ALUMINIUM 'TEE-OFF' CONNECTOR



<b>DESCRIPTION</b>	ALUMINIUM 'TEE-OFF' CONNECTOR
<b>SIZE (mm)</b>	70L x 50W x 30H
<b>COLOUR</b>	ALUMINIUM
<b>WEIGHT</b>	0.4 kg

**MATERIAL:** ALUMINIUM

**HARDWARE:** STAINLESS STEEL - GRADE 304

**TESTING:** DESIGNED TO BE COMPLIANT TO AS4325.1

**SALES DRAWING No:** 4-S0011

**NOTE:** These connectors are for equal and unequal conductors of Aluminium, Steel-cored Aluminium and Copper.

Conductors	
Run and Tap	Diameter
7/1.35 to 7/3.75	4mm to 12mm