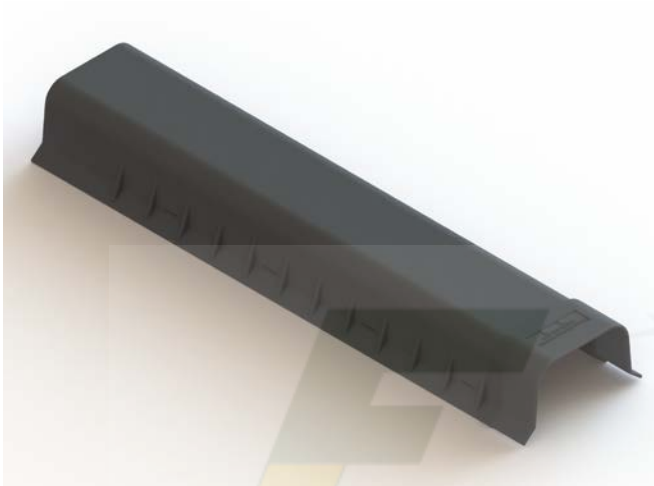


DATA SHEET
PCG1500D
 POLY CABLE GUARD



DESCRIPTION	POLY CABLE GUARD
SIZE (mm)	1500L x 365W x 187H
COLOUR	BLACK
WEIGHT	8.25 kg

MATERIAL: POLYETHYLENE

HARDWARE: N/A

TESTING:

SALES DRAWING No: 1-S0081

NOTE: The PCG-1500 Poly Cable Guards are easily extendable, as one end is raised to accept the opposite end of another Poly Cable Guard, giving a much stronger join than butting ends together that are identical.
 Mounting to steel or concrete poles is by using band-it straps through pre-cut slots.
 Mounting to wooden poles is either by the method above or self-tapping through the side flanges