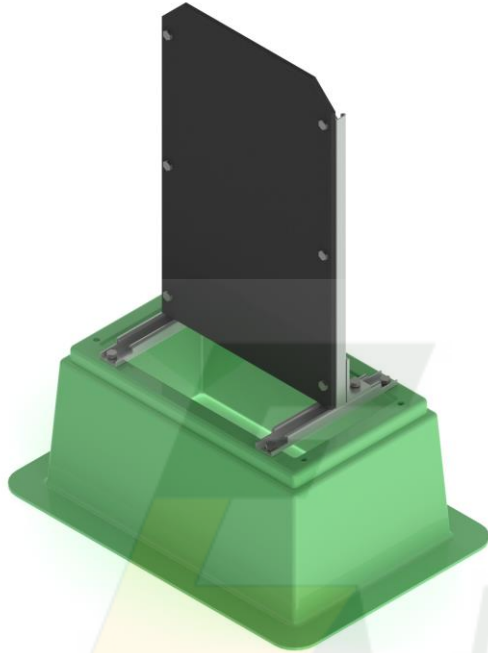


# DATA SHEET

## USFBDPNF1

### UNISTRUT STEEL FRAME & PANEL FOR PBNF1 & FBNF1 series

(Mounted in FBNF1G Base – sold separately)



<b>DESCRIPTION</b>	UNISTRUT STEEL FRAME & PANEL for PBNF1 & FBNF1
<b>SIZE (mm)</b>	720H x 427W x 310D
<b>COLOUR</b>	BLACK PANEL & UNI-STRUT FRAME
<b>WEIGHT (kg)</b>	5.0 kg

**MATERIAL:** UNI-STRUT & TYPE 'X' SWITCHPANEL

**HARDWARE:** STAINLESS STEEL – GRADE 304

**TESTING:**

**SALES DRAWING No:** 1-S0102

**NOTE:** Type 'X' Switchpanel blank and secured to uni-strut frame allowing flexibility in panel position front to back. Designed to accommodate a range of 3 phase fuse disconnectors and single phase fuses.

Panel size: 700h x 420w x 10 thick.

\*\*Add '/e' to part number for escutcheon panel e.g. USFPNF1/E\*\*