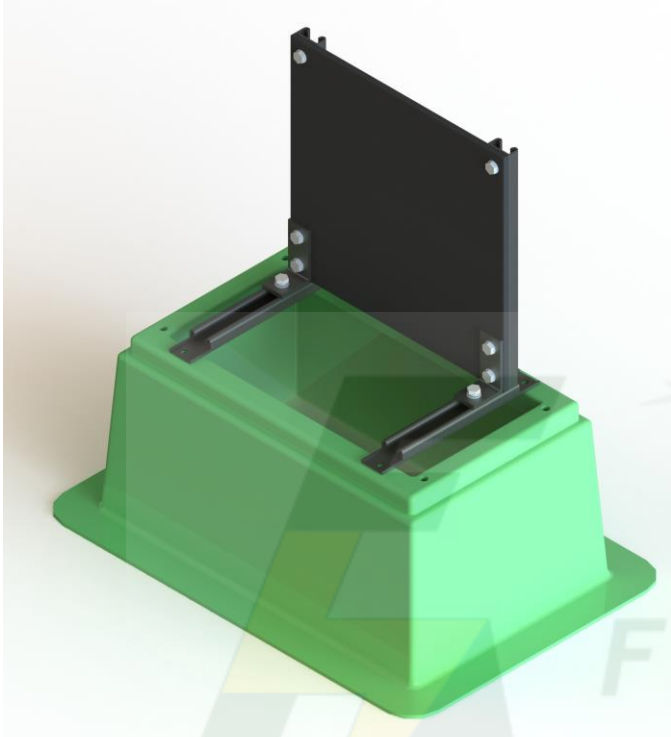


DATA SHEET USFBDPNF8

UNI-STRUT FRAME & PANEL for FBNF8

(Mounted in FBNF8G Base – sold separately)



DESCRIPTION	UNISTRUT STEEL FRAME & PANEL for PBNF8
SIZE (mm)	421H x 420W x 310D
COLOUR	BLACK PANEL & UNI-STRUT FRAME
WEIGHT (kg)	

MATERIAL: UNI-STRUT & TYPE 'X' SWITCHPANEL

HARDWARE: STAINLESS STEEL – GRADE 304

TESTING:

SALES DRAWING No: 1-S0037

NOTE: Type 'X' Switchpanel blank and secured to uni-strut frame allowing flexibility in panel position front to back. Designed to accommodate a range of 3 phase fuse switch disconnectors and single phase fuses.

The Panel is capable of fitting 2 x 250Amp Fuse Disconnectors side by side.

Add 'E' to part number for escutcheon panel e.g. USFPNF8/E