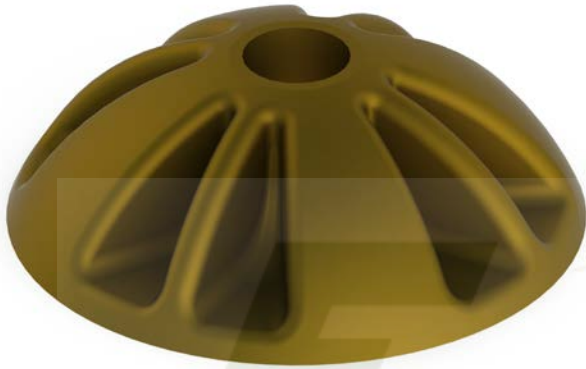


# DATA SHEET

## ET-19P EARTHING TERMINAL



<b>DESCRIPTION</b>	AIRPORT EARTHING TERMINAL
<b>SIZE (mm)</b>	Ø92.5 x 30H
<b>COLOUR</b>	GUNMETAL
<b>WEIGHT</b>	0.75 kg

**MATERIAL:** GUNMETAL

**HARDWARE:** N/A

**TESTING:** NOT AVAILABLE

**SALES DRAWING No:** 8-S0177

**NOTE:** Welded to the end of an earth rod to be used as an earthing terminal. Also available with two M8 threaded holes machined into the casting for the connecting of lugs Part No: ET19SP