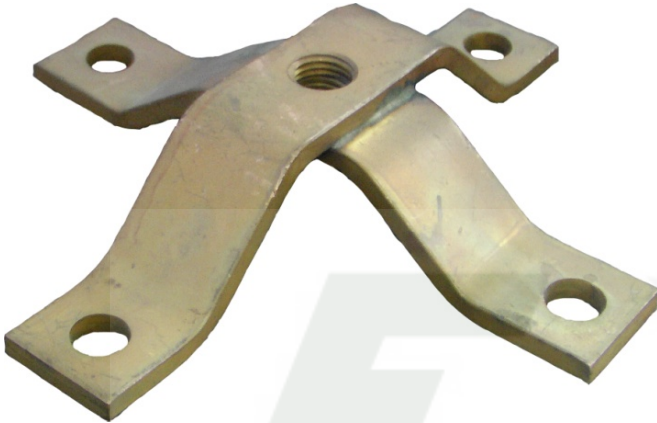


## DATA SHEET

### CB''XX''4W – SB''XX''4W<sub>BASE</sub> FOR LIGHTNING FINIAL



<b>DESCRIPTION</b>	4 LEG FINIAL BASE
<b>SIZE (mm)</b>	175L x 175W x 37H
<b>COLOUR</b>	COPPER OR STAINLESS STEEL
<b>WEIGHT</b>	0.65 kg

**MATERIAL:** COPPER OR STAINLESS STEEL FLATBAR

**HARDWARE:** N/A

**TESTING:** NOT AVAILABLE

**SALES DRAWING No:** 8-S0092

**NOTE:** Used in conjunction with Lightning Finial. Made from high strength Copper or Stainless Steel. All tapped holes are M10, M12, or M16