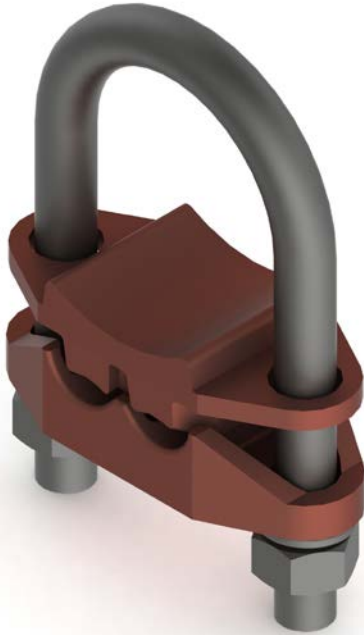


# DATA SHEET

## PEC 'XX' FENCE POST & PIPE CLAMP



<b>DESCRIPTION</b>	FENCE POST & PIPE CLAMP
<b>SIZE (mm)</b>	Various
<b>COLOUR</b>	GUNMETAL
<b>WEIGHT</b>	SEE TABLE

**MATERIAL:** GUNMETAL

**HARDWARE:** STAINLESS STEEL – GRADE 304

**TESTING:** Designed to be compliant to AS1154.1-2009  
 (non-tension fittings – short-time current test)

**NOTE:** EARTH CLAMPS FOR CONNECTING EARTH WIRE TO PIPES OR FENCE POSTS

Catalogue No.	Pipe Size (mm)		Cable Range	Weight (kg)	Sales DWG
	I.D	O.D			
PEC26	19 (3/4")	26	16-120mm <sup>2</sup>	0.315	8-S0047
PEC34	25 (1")	34	16-120mm <sup>2</sup>	0.325	8-S0048
PEC34D	25 (1")	34	2 x 16-120mm <sup>2</sup>	0.325	8-S0049
PEC43	32 (1 1/4")	43	16-120mm <sup>2</sup>	0.435	8-S0050
PEC43D	32 (1 1/4")	43	2 x 16-120mm <sup>2</sup>	0.435	8-S0051
PEC48D	38 (1 1/2")	48	2 x 16-120mm <sup>2</sup>	0.450	8-S0052
PEC60T	51 (2")	60	1,2 or 3 x 16-120mm <sup>2</sup>	0.760	8-S0053