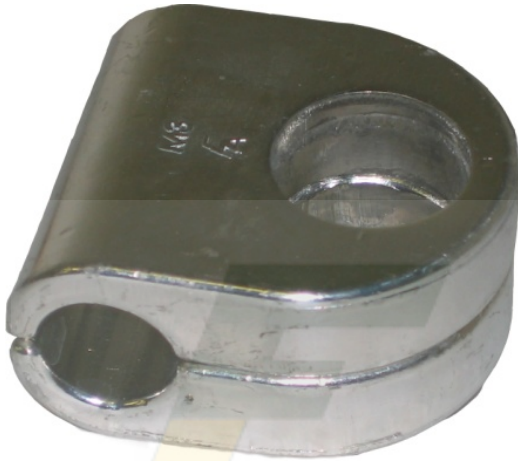


DATA SHEET

M3 POLE EARTHING CLAMP



DESCRIPTION	POLE EARTHING CLAMP
SIZE (mm)	50L x 44W x 12H
COLOUR	TINNED BRASS
WEIGHT	0.13 kg

MATERIAL: FORGED BRASS ELECTRO TIN PLATED

HARDWARE: N/A

TESTING: Designed to be compliant to AS1154.1-2009 (non-tension fittings – short-time current test)

SALES DRAWING No: 8-S0062

NOTE: The pole earthing conductor is held by 2-half-clamps which directly attaches to the pole
 SUIT 7/1.75 BARE COPPER CONDUCTOR